

1
2
3

THIS MAP AND ATTACHED REPORT ARE NOT FULLY COMPLETE WITHOUT THE SIGNATURE AND THE ORIGINAL RAISED SEAL OF A FLORIDA LICENSED SURVEYOR AND MAPPER

THIS MAP AND ATTACHED REPORT ARE NOT FULLY COMPLETE WITHOUT THE SIGNATURE AND THE ORIGINAL RAISED SEAL OF A FLORIDA LICENSED SURVEYOR AND MAPPER

THIS MAP AND ATTACHED REPORT ARE NOT FULLY COMPLETE WITHOUT THE SIGNATURE AND THE ORIGINAL RAISED SEAL OF A FLORIDA LICENSED SURVEYOR AND MAPPER

THIS MAP AND ATTACHED REPORT ARE NOT FULLY COMPLETE WITHOUT THE SIGNATURE AND THE ORIGINAL RAISED SEAL OF A FLORIDA LICENSED SURVEYOR AND MAPPER

THIS MAP AND ATTACHED REPORT ARE NOT FULLY COMPLETE WITHOUT THE SIGNATURE AND THE ORIGINAL RAISED SEAL OF A FLORIDA LICENSED SURVEYOR AND MAPPER

THIS MAP AND ATTACHED REPORT ARE NOT FULLY COMPLETE WITHOUT THE SIGNATURE AND THE ORIGINAL RAISED SEAL OF A FLORIDA LICENSED SURVEYOR AND MAPPER

DATE: 3/16/17
APPROVED: [Signature]
TUY: [Signature]

NO. 1
O.R. 170800.14
ELEVATION: 132.4
N 170800.14
E 591170.60
N 170894.120
E 77.44

LEGEND:
(THESE FEATURES ARE TO SCALE)
CURB ROAD
PAVED ROAD
CONCRETE SURFACE
UNPAVED ROAD
FENCE
GUARDRAIL
WALL
RAILROAD
STRUCTURE
TREE LINE
SHRUB LINE

(THESE FEATURES ARE REPRESENTED BY SYMBOLS NOT TO SCALE)
CONTROL
TARGET NUMBER
ELECTRICAL
ELEVATION
LIGHT POLE
TRAFFIC LIGHT
SIGN
POST
FLAG
MAIL BOX
GUYWIRE

(THESE FEATURES ARE NOT TO SCALE)
CATCH BASIN
ELECTRICAL
MISCELLANEOUS SYMBOL
CULVERT
SWAMP/MARSH
MANHOLE
HYDRANT
PALM
SHRUB

(THESE INFORMATIVE LABELS ARE NOT SCALE DEPENDENT)
W.E. WATER ELEVATION
x 120.1 SPOT ELEVATION
MISC MISCELLANEOUS

1) North, the grid, and the coordinates shown herein are referenced to the West Zone of the Florida State Plane Coordinate System, NAD 83, 2011 adjustment.
2) Elevations are to NAVD 88.
3) This topographic survey was prepared by the automatic method; the attached report for map accuracy and surveyor's signature and seal. This map is limited to those features visible on aerial photography.

1) North, the grid, and the coordinates shown herein are referenced to the West Zone of the Florida State Plane Coordinate System, NAD 83, 2011 adjustment.
2) Elevations are to NAVD 88.
3) This topographic survey was prepared by the automatic method; the attached report for map accuracy and surveyor's signature and seal. This map is limited to those features visible on aerial photography.

1) North, the grid, and the coordinates shown herein are referenced to the West Zone of the Florida State Plane Coordinate System, NAD 83, 2011 adjustment.
2) Elevations are to NAVD 88.
3) This topographic survey was prepared by the automatic method; the attached report for map accuracy and surveyor's signature and seal. This map is limited to those features visible on aerial photography.

PICKETT SURVEYING • ENGINEERING

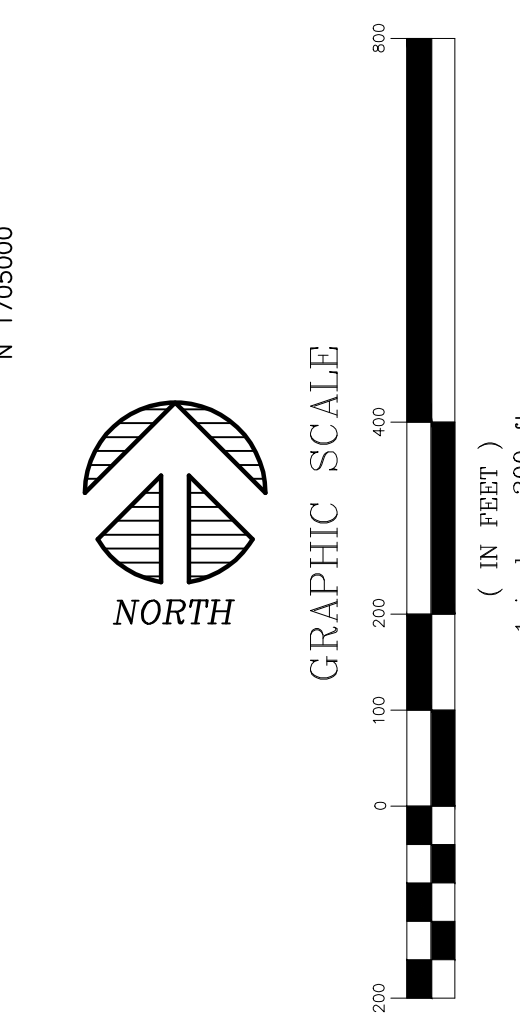
PICKETT AND ASSOCIATES, INC.
475 500
FLORIDA 33830
PHONE (888) 533-9095
LICENSED BUSINESS NO. L8384

Edited by: RP
Compiled by: BF
Flight Date: 1/21/17
Drawing Name: 18254.DWG

TOPOGRAPHIC SURVEY
MCGINLEY FAMILY
LOCATED IN SECTIONS 9&16, TOWNSHIP 17 SOUTH,
RANGE 21 EAST

PREPARED FOR: MCGINLEY FAMILY LIMITED PARTNERSHIP

PROJECT No.	No.
18254	1
DRAWING No.	3
LD-6105	



- LEGEND:**
- (THESE FEATURES ARE TO SCALE)
- PIPELINE
 - RECREATION
 - EDGE OF GROVE
 - EDGE OF WATER
 - SWAMPLINE
- (THESE INFORMATIONAL LABELS ARE NOT SCALE DEPENDENT)
- W.L. WATER ELEVATION
 - x 120.1 SPOT ELEVATION
 - MISC MISCELLANEOUS

- (THESE FEATURES ARE TO SCALE)
- CURB
 - PAVED ROAD
 - CONCRETE SURFACE
 - UNPAVED ROAD
 - FENCE
 - GUARDRAIL
 - WALL
 - RAILROAD
 - STRUCTURE
 - TREE LINE
 - SHRUB LINE

- (THESE FEATURES ARE REPRESENTED BY SYMBOLS NOT TO SCALE)
- CONTROL
 - VALVE
 - CATCH BASIN
 - ELECTRICAL
 - MISCELLANEOUS SYMBOL
 - CULVERT
 - SWAMP/MARSH
 - MANHOLE
 - HYDRANT
 - TREE
 - PALM
 - SHRUB
 - MAIL BOX
 - GUYWIRE

SURVEYOR'S NOTES:

- 1.) North, the grid, and the coordinates shown hereon are referenced to the West Zone of the Florida State Plane Coordinate System, NAD 83, 2011 adjustment.
- 2.) Elevations are to NAVD 88.
- 3.) This topographic survey was prepared by the automatic method using the attached report for map accuracy and the surveyor's signature and seal. This map is limited to those features visible on aerial photography.

REVISION	DATE	APPROVED	BY	ORIGINAL RELEASE
No.	DATE	APPROVED	BY	ORIGINAL RELEASE
O.R.	3/16/17	TJY		

THIS MAP AND ATTACHED REPORT ARE NOT FULL AND COMPLETE WITHOUT THE OTHER AND ARE NOT VALID WITHOUT THE ORIGINAL RAISED SEAL OF A FLORIDA LICENSED SURVEYOR AND MAPPER

PICKETT SURVEYING • ENGINEERING

PICKETT AND ASSOCIATES, INC.
475 500
FLORIDA 33830
PHONE (888)-533-9095
LICENSED BUSINESS NO. LB384

Flight Date: 1/21/17
Drawing Name: 18254.DWG

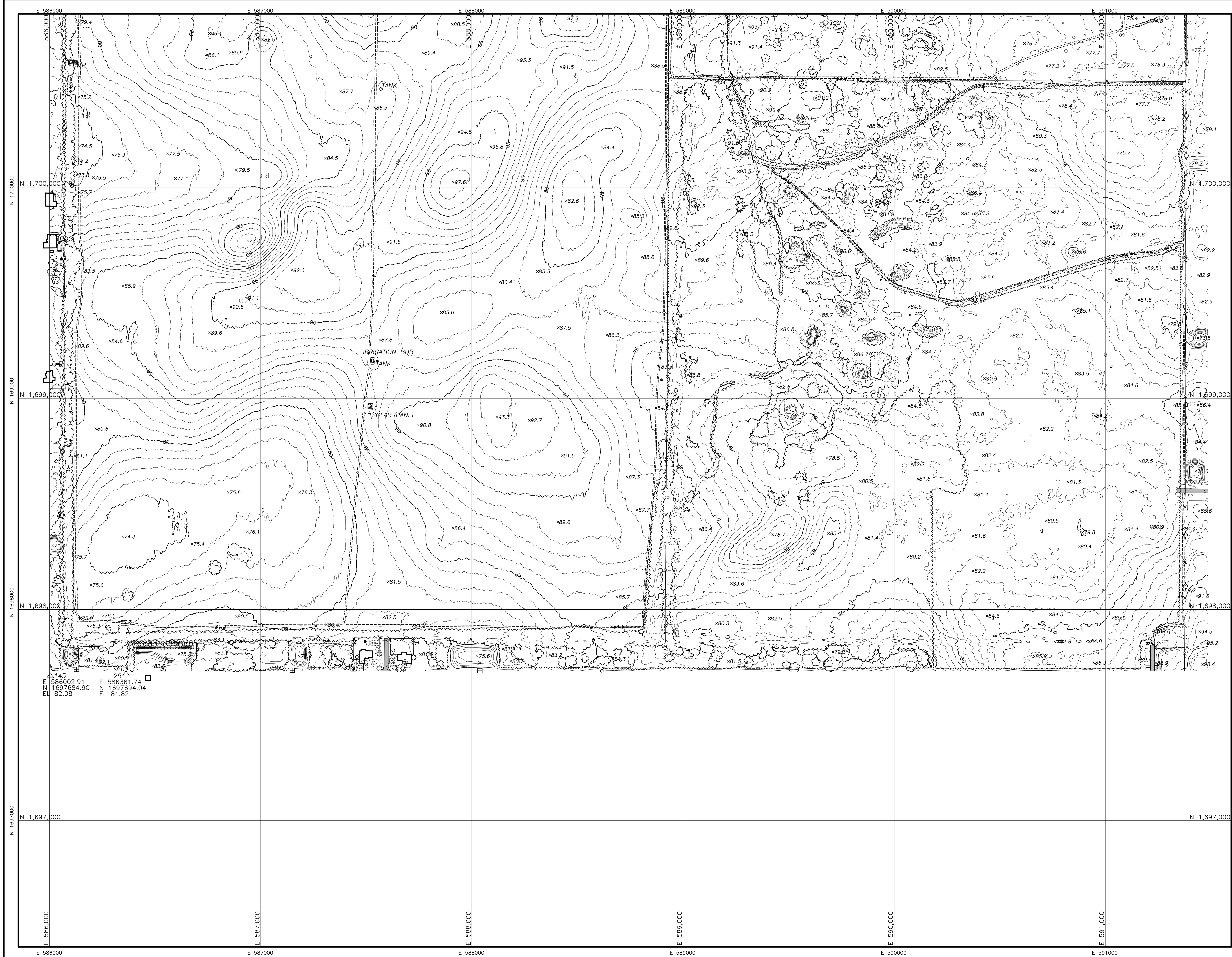
Edited by: RP
Compiled by: BF

Horiz. Scale: 1" = 200'
Contour Interval: 1'

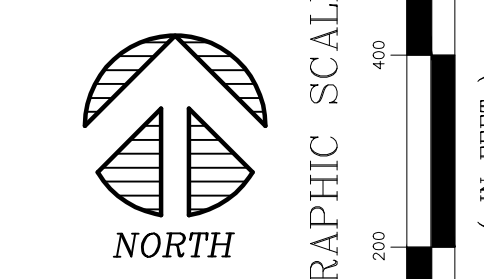
TOPOGRAPHIC SURVEY
MCGINLEY FAMILY
LOCATED IN SECTIONS 9&16, TOWNSHIP 17 SOUTH,
RANGE 21 EAST

PREPARED FOR: MCGINLEY FAMILY LIMITED PARTNERSHIP

PROJECT No.	No.
18254	2
DRAWING No.	OF
LD-6105	3



145
 586002.91 E 586361.74
 1697684.90 N 1697694.04
 82.08 EL 81.82



1
2
3

- LEGEND:
- (THESE FEATURES ARE TO SCALE)
- PIPELINE
 - RECREATION
 - EDGE OF GROVE
 - EDGE OF WATER
 - SWAMP/ MARSH
- (THESE INFORMATIVE LABELS ARE NOT SCALE DEFENDANT)
- W.E. WATER ELEVATION
 - x 120.1 SPOT ELEVATION
 - MISC MISCELLANEOUS

- (THESE FEATURES ARE TO SCALE)
- CURB
 - PAVED ROAD
 - CONCRETE SURFACE
 - UNPAVED ROAD
 - FENCE
 - GUARDRAIL
 - WALL
 - RAILROAD
 - STRUCTURE
 - TREE LINE
 - SHRUB LINE

- (THESE FEATURES ARE REPRESENTED BY SYMBOLS NOT TO SCALE)
- CONTROL POINT
 - TARGET NUMBER
 - VALVE
 - ELECTRICAL
 - MISCELLANEOUS SYMBOL
 - CULVERT
 - SWAMP/MARSH
 - MANHOLE
 - HYDRANT
 - TREE
 - PALM
 - SHRUB
 - MAIL BOX
 - GUYWIRE

SURVEYOR'S NOTES:

1) North, the grid, and the coordinates shown hereon are referenced to the West Zone of the Florida State Plane Coordinate System, NAD 83, 2011 adjustment.

2) Elevations are to NAVD 88.

3) This topographic survey was prepared by the automatic method. See the attached report for map accuracy and surveyor's signature and seal. This map is limited to those features visible on aerial photography.

THIS MAP AND ATTACHED REPORT ARE NOT FULL AND COMPLETE WITHOUT THE OTHER AND ARE NOT VALID WITHOUT THE ORIGINAL RAISED SEAL OF A FLORIDA LICENSED SURVEYOR AND MAPPER.		DATE 3/16/17	APPROVED T.J.Y.	REVISION ORIGINAL RELEASE
PUCKETT AND ASSOCIATES, INC. 475 500 SOUTH BARTON FLORIDA 33830 PHONE (888)-533-9095 LICENSED BUSINESS NO. LB364		Flight Date: 1/21/17 Drawing Name: 18254.DWG		
PICKETT SURVEYING • ENGINEERING		Edited by: RP Complied by: BF		
Horizontal Scale: 1" = 200' Contour Interval: 1'				
TOPOGRAPHIC SURVEY MCCINLEY FAMILY LOCATED IN SECTIONS 9&16, TOWNSHIP 17 SOUTH, RANGE 21 EAST PREPARED FOR: MCCINLEY FAMILY LIMITED PARTNERSHIP				
PROJECT No. 18254	No. 3			
DRAWING No. LD-6105	No. 3			